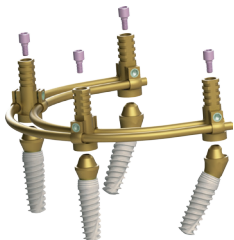


# Clicq™ Multi Bar

## On 4 / On 6

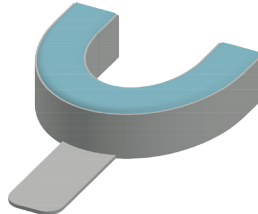


### Pre-Fabricated Permanent Bar for Over Denture

(User Manual)

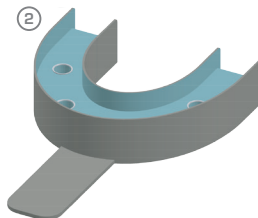
Under license of: Kasko K.N Ltd.  
Design Patent Pending No. 62154  
Patent Pending No. US 62/679,389

①

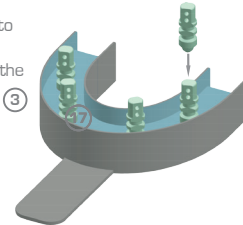


Take an impression using open or closed impression copings

②

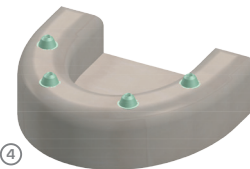


③



Attach the analogs to the impression tray in order to prepare the model for bar assembling.

④



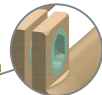
Prepare a model with analogs  
(Made from lab plaster or Clicq lab resin)

⑤

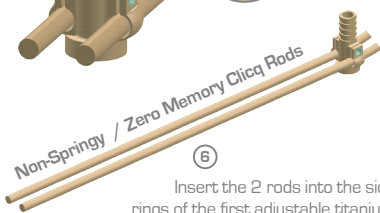


fixation screw

Side micro screw



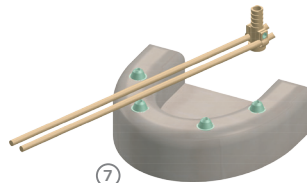
⑥



Non-Springy / Zero Memory Clicq Rods

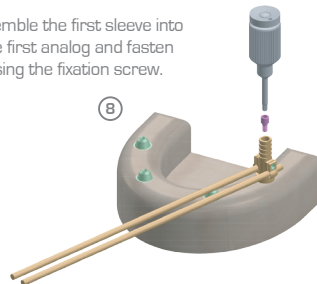
Insert the 2 rods into the side rings of the first adjustable titanium sleeve and fasten both side micro screws until the 2 rods are totally fixed.  
(Using driver with Hex 1.25mm)

⑦



Assemble the first sleeve into the first analog and fasten using the fixation screw.

⑧



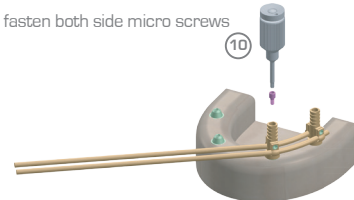
⑨

Insert the second adjustable titanium sleeve into the 2 rods and slide it towards the second analog and bend the rods if needed and fasten the 2 sleeves.

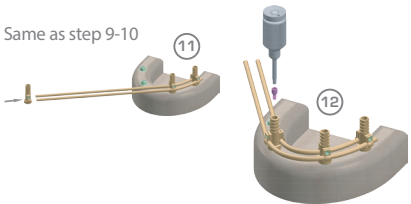
Move the second sleeve until it fits together with the analog and fasten using the fixation screw, (Using driver with Hex 1.25mm).

(Don't fasten both side micro screws now).

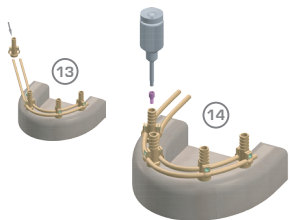
⑩



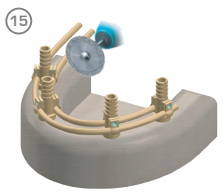
\* Same as step 9-10



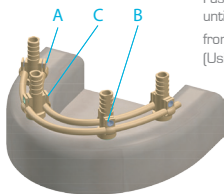
\* Same as step 11-12



Cut the spare needles rods using a hand cutter or cutting disc.

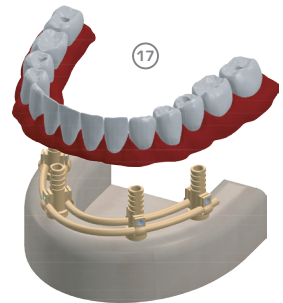


15  
Fasten both side micro screws until the 2 rods are totally fixed from **A** to **C**  
[Using driver with Hex 1.25mm].



For On 6 bar, please keep the procedure as done for on 4 up to the sixth sleeve.

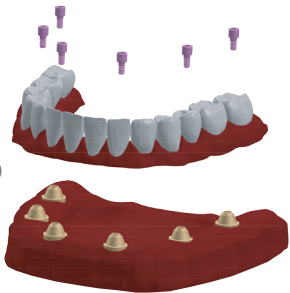
Note: for precise results and checking if your impressing tray was accurate, disassemble the clicq multi bar out of the model and try on your patient.



For temporary use: Assemble the bar to the temporary denture using self curing acrylic resin in the denture bottom after preparing the needed groove for the bar.

For permanent use: A permanent denture should be prepared directly on the multi Clicq bar.

18



Connect the denture to the Muti Units in your patient mouth by using the fixation screws and ratchet driver.



Do not assemble the bar and /or bending the rods inside the patient mouth.

Symbol	Description
 Single Use	Do not reuse
 CAUTION	Caution
	Consult instructions for use
	Do not use if package is damaged
	Batch Code
	Catalogue Number
	Non Sterile
	Manufacturer
	Symbol for "Use by Prescription only"



Authorized Seller:



Under the license of: Kasko K.N Ltd.  
www.kasko-kn.com